



# THE STATE OF GEORGIA

## EXECUTIVE ORDER

BY THE GOVERNOR:

**WHEREAS:** The State of Georgia holds title to 0.99 acres known as 1410 Dean Forest Road, and the Georgia Department of Driver Services ("DDS") is the custodian of said property as described in Exhibit A (the "Premises") in the City of Garden City, Chatham County; and

**WHEREAS:** The Georgia Public Safety Training Center (the "GPSTC") has identified a need for the Premises to carry out its mission; and

**WHEREAS:** On January 11, 2006, the DDS Board approved the transfer of custody and control of the Premises to the custody and control of GPSTC to meet the mission of that agency, and authorized the DDS Commissioner to seek such a change; and

**WHEREAS:** On October 9, 2008, the GPSTC's Board approved and accepted the transfer of custody and control of the Premises from DDS to GPSTC and authorized the GPSTC Director to effect such a change.

**NOW, THEREFORE, PURSUANT TO THE AUTHORITY VESTED IN ME AS GOVERNOR OF THE STATE OF GEORGIA, IT IS HEREBY**

**ORDERED:** The custody of the above-described property be and the same is hereby transferred from the Department of Driver Services to the Georgia Public Safety Training Center.

This 27<sup>th</sup> day of January, 2009.

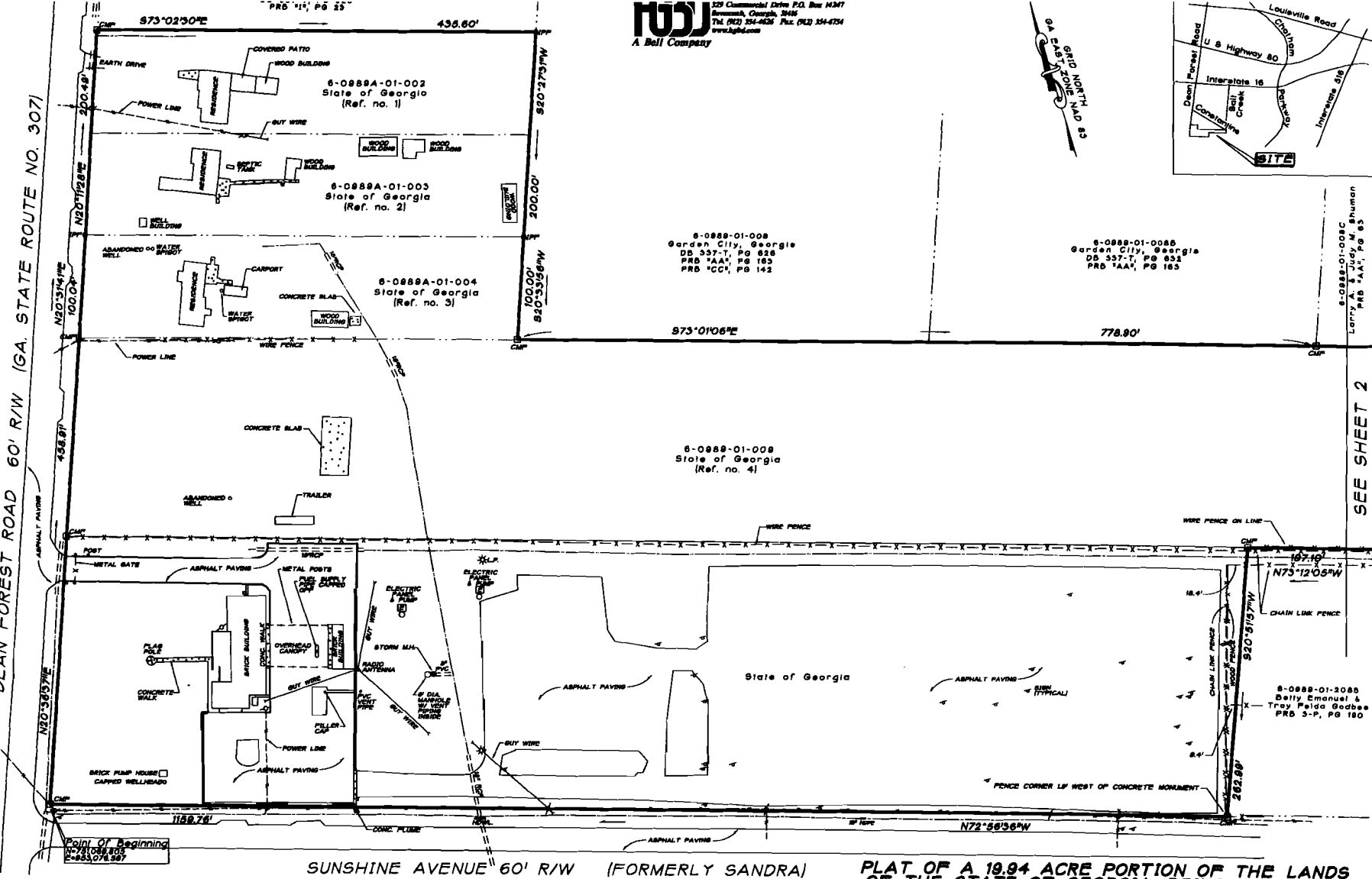
  
GOVERNOR

**ATTEST:**

  
EXECUTIVE SECRETARY

GARDEN CITY, IDEAN FOREST & I-16, PROPERTY 1, STATE OF GA PROP# FINAL-BASE-10P1

DEAN FOREST ROAD 60' R/W (GA. STATE ROUTE NO. 307)



**LLD**  
A Bell Company

329 Commercial Drive P.O. Box 1247  
Roswell, Georgia, 30086  
Tel. (404) 584-4000 Fax. (404) 584-4754  
www.llld.com



6-0889-01-008  
Garden City, Georgia  
DB 337-T, PG 826  
PRB 'AA', PG 183  
PRB 'CC', PG 142

6-0889-01-008B  
Garden City, Georgia  
DB 337-T, PG 826  
PRB 'AA', PG 183

6-0889-01-008  
State of Georgia  
(Ref. no. 4)

6-0889-01-2085  
Bobby Emanuel &  
Troy Paide Godes  
PRB 3-P, PG 180

6-0889-01-008C  
LARRY A. S. JUDY, M. SHUMAN  
PRB 'AA', PG 83



To the best of my knowledge, information and belief all angles, bearings, measurements of courses and distances and monument locations are as shown and have been proved by land survey and in my opinion, this is a correct representation of the land platted and has been prepared in conformity with the minimum standards and requirements of Georgia Law and is suitable for recording.

□ CMP = CONCRETE MONUMENT FOUND  
■ CMS = CONCRETE MONUMENT SET  
○ IPP = IRON PIN FOUND  
● IPS = 3/8" IRON PIN SET

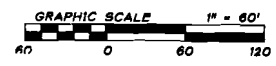
ANGULAR ERROR: 1" PER POINT  
ERROR OF CLOSURE: FIELD 1/28,862  
ERROR OF CLOSURE: PLAT 1/494,369  
EQUIPMENT USED: TOTAL STATION  
ADJUSTMENT METHOD: COMPASS RULE  
TOTAL AREA: 19.94 ACRES

SEE SHEET 2 FOR NOTES AND REFERENCES

PLAT OF A 19.94 ACRE PORTION OF THE LANDS OF THE STATE OF GEORGIA, BEING A PORTION OF THE FORMER LOVELL COMPANY TRACT, SEVENTH G.M. DISTRICT, GARDEN CITY, CHATHAM COUNTY, GEORGIA

For GARDEN CITY, GEORGIA

SHEET 1 OF 2



PLAT DATE: NOVEMBER 4, 2008  
FIELD SURVEY DATE:

SEE SHEET 2