



THE STATE OF GEORGIA

EXECUTIVE ORDER

BY THE GOVERNOR:

WHEREAS: The State of Georgia holds title to approximately 20 acres in the City of Garden City, Chatham County, as described in Exhibit A (the "Property"), formerly known as the Dean Forest Road State Patrol Post and Division of Motor Vehicles site; and

WHEREAS: Said Property is in the custody of the Georgia Public Safety Training Center; and

WHEREAS: There are structures on the subject Property (the "Structures") which were declared unserviceable by the Board of Public Safety at its meeting on October 9, 2008, and Georgia Public Safety Training has no plans to use the Structures for any purpose; and

WHEREAS: The Director of the Georgia Public Safety Training Center has requested permission to raze and demolish said structures as soon as possible; and

WHEREAS: On November 3, 2008, the City of Garden City, Georgia approved and concurred in the razing and demolition of said Structures as a public service.

NOW, THEREFORE, PURSUANT TO THE AUTHORITY VESTED IN ME AS GOVERNOR OF THE STATE OF GEORGIA, IT IS HEREBY

ORDERED: The Georgia Public Safety Training Center is hereby authorized and directed to provide for the razing, demolition and disposal of said Structures under the terms and conditions which are deemed to be in the best interests of the State of Georgia.

This 27th day of January, 2009.

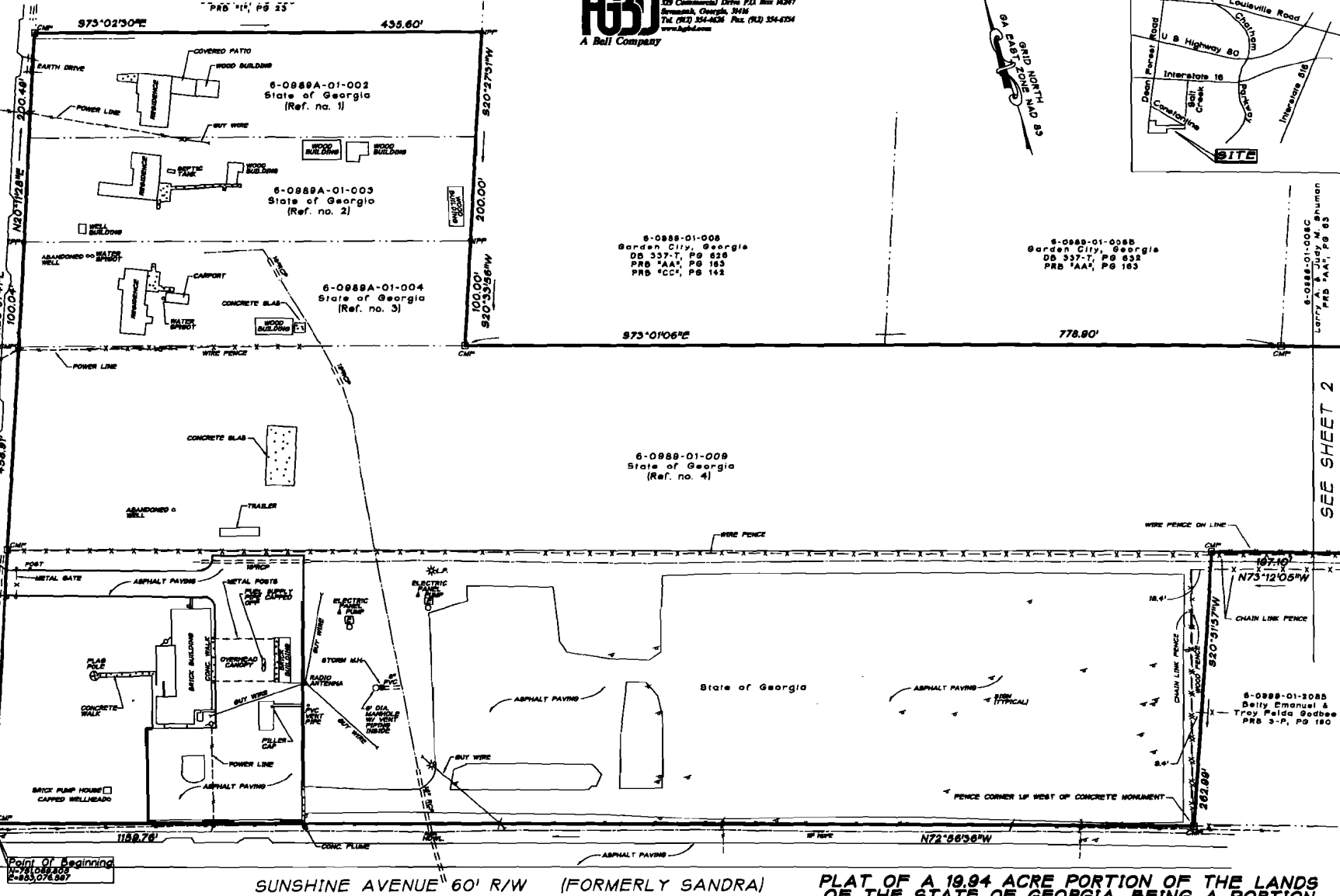

GOVERNOR

ATTEST:


EXECUTIVE SECRETARY

GARDEN CITY IDEAN FOREST & 1-18 | PROPERTY | STATE OF GA PROP. FINAL BASE 10/1

DEAN FOREST ROAD 60' R/W (GA. STATE ROUTE NO. 307)



HJJ
A Ball Company
129 Commercial Drive P.O. Box 10247
Bremen, Georgia, 30156
Tel. (770) 354-6234 Fax. (770) 354-6234
www.hjball.com



6-0889-01-008C
Larry A. & Judy M. Shuman
PRB 'AAA', PG 163

SEE SHEET 2



To the best of my knowledge, information and belief all angles, bearings, measurements of courses and distances and monument locations are as shown and have been proved by land survey and in my opinion, this is a correct representation of the land platted and has been prepared in conformity with the minimum standards and requirements of Georgia Law and is suitable for recording.

CMP = CONCRETE MONUMENT FOUND
 CMS = CONCRETE MONUMENT SET
 IPF = IRON PIN FOUND
 IPS = 5/8" IRON PIN SET
 ANGULAR ERROR: 1" PER POINT
 ERROR OF CLOSURE: FIELD 1/28,882
 ERROR OF CLOSURE: PLAT 1/484,389
 EQUIPMENT USED: TOTAL STATION
 ADJUSTMENT METHOD: COMPASS RULE
 TOTAL AREA: 19.84 ACRES

SEE SHEET 2
FOR NOTES AND
REFERENCES

PLAT OF A 19.84 ACRE PORTION OF THE LANDS OF THE STATE OF GEORGIA, BEING A PORTION OF THE FORMER LOVELL COMPANY TRACT, SEVENTH G.M. DISTRICT, GARDEN CITY, CHATHAM COUNTY, GEORGIA

For
GARDEN CITY, GEORGIA

SHEET 1 OF 2



PLAT DATE: NOVEMBER 4, 2008
FIELD SURVEY DATE: